



# MORSE 500SS SERIES

SPECIFICATIONS SHEET

## STAINLESS STEEL VERTICAL-LIFT DRUM POURERS

### Lift & Control Dispensing of Your Drum

Lift, tilt and drain drum contents with ease. Hydraulic lift and tilt makes it simple to raise and tilt a heavy drum. Vertical lifting track keeps drum reach constant through the full lift range. Heavy duty hydraulic lift cylinders include a velocity fuse to provide a full line shut-off in the event of a line failure.

- Frame made of Bead Blast Finish Type 304 Stainless Steel
- Lift, move and control dispensing of drum up to 106" (269 cm) high
- Control the lifting height and pouring angle
- Models with Power Lift and Tilt
- Available built-in weighing capability to weigh as you pour!
- 360° Tilt Control in either direction
- **Capacity:** 800 Lb. (363 kg) full drum  
500 Lb. (227 kg) half-full\* drum

Dispense into a vat, hopper, mixer or other container up to 106" (269 cm) high. Manual lift and tilt also available. Easy to maneuver on two 8" (20.3 cm) durable polyolefin wheels and two 6" (15.2 cm) steel swivel casters with polyolefin wheels.

Frame made of bead blast finished type 304 stainless steel. Welds are NOT ground or polished. Ratchet and pawl on drum holder are NOT stainless, but coated with FDA compliant powder coat. Gears, sprockets and Tilt Chain are not stainless steel, but have stainless steel guard covers.

- **Option # SSC-500** - Stainless Steel Casters with polyolefin wheels
- **Option # 5597SSi-P** - Stainless Steel Ratchet and Pawl
- **Option # SSG-MT** - Stainless Steel Gears, Sprockets and Tilt Chain on manual tilt model
- **Option # SSG-PT** - Stainless Steel Gears, Sprockets and Tilt Chain on power tilt model
- **Option # 3008SSi-P** - Stainless Steel Cylinder for 520SS or 525SS Series
- **Option # 3006SSi-P** - Stainless Steel Cylinder for 510SS or 515SS Series
- **Option FGO** - Food Grade Hydraulic Oil





Model 515SS-N-110 shown is equipped with a general purpose scale, and has 115V AC powered lift and tilt.

\* Half-full rating is based on tilt mechanism's capacity for handling a bottom heavy drum. A partially full drum with unbalanced and shifting load is harder to tilt than a full drum.



"T" Type Intrinsic safe scale indicator for use in hazardous areas.

"N" Type scale indicator NOT for use in hazardous environments.

## Scale-Equipped Models

Weigh As You Pour!

### TWO TYPES OF SCALES

The digital indicator keeps you informed of the drum weight, so you can weigh while pouring. Scales are simple to use and to read enabling accurate batching by weight. The touch pads include numbers for tare entry. Four load cells accurately sense weight regardless of the tilt angle of the drum. Battery saving "sleep" mode turns indicator off when scale is not in use. Display weight to 0.1 Lb. or kg. Set scale to display either pounds or metric units. Accuracy of +/-0.2%. Scale has NO data storage capability. Maximum operating temperature is 104° F (40° C).

Scale components will be installed and calibrated before leaving the Morse factory. However, the rigors of transportation may change scale calibration. To assure proper accuracy, the user should employ local scale service personnel to check the function and calibration of the scale. Cost of on-site calibration is not included in the selling price.

**T-Type Scale** - Intrinsic safe, ultra low power intensity (ULPI) scale indicator for use in many hazardous areas, approved for all classes, groups and divisions of N.E.C. hazardous environment classifications. The hand pumped or air powered drum handler with this intrinsic safe weighing system may be used in many hazard areas where ordinary electric powered equipment would be prohibited. Comes with battery pack and 115V 60Hz charger. For 220V/50Hz applications, battery charger will require a step down transformer - order part number 93740-P. Models with spark resistant metal parts, such as drum holder bands are indicated by an "M" in the model number.

**N-Type Scale** - Economical general purpose instrument for use in a variety of weighing applications. NOT for use in hazardous areas. Powered by five ordinary alkaline D-cell batteries.

## MORCINCH DRUM HANDLING SYSTEM



- Automatically adjusts for 22" to 23.5" (56 to 59.7 cm) diameter drum
- Accepts Diameter Adaptors for your smaller drum
- Bolt-On Bracket Assembly to handle a plastic drum, recommended to more securely handle a fiber drum
- Bolt-on Top Rim Clamp for 55-gallon (210 liter) plastic drum or fiber drum
- Includes a flexible cover on the cinch chain to help protect the sidewall of your drum
- Incorporates alloy cinch chain and durable stress relief weld joints

## MORCINCH™ OPTIONS

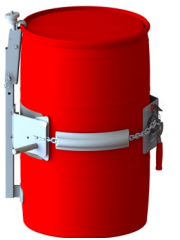
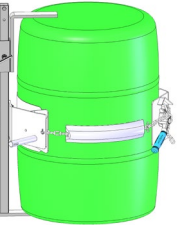
The MORCINCH™ drum holder is designed to handle a 55-gallon (210 liter) steel drum. It automatically adjusts from 22" to 23.5" (56 to 59.7 cm) in diameter. The cinch chain with pawl and ratchet mechanism is used to secure the drum in the holder.

To handle other drums, order one of the following:

**The Bracket Assembly** provides a brace at top and bottom of your drum to prevent it from slipping lengthways through the drum holder. The Bracket Assembly is required to handle a rimless plastic drum, and recommended to more securely handle a fiber drum. It adjusts for 31" to 39" (79 to 99 cm) tall drum. **Kit # 4556SS-P Stainless Steel Bracket Assembly.**

**The Top Rim Clamp** grips the upper rim of your drum to prevent it from slipping. Use to handle a 55-gallon (210 liter) rimmed plastic or fiber drum. To handle a 55-gallon plastic drum with top rim, you must install either the Bracket Assembly or the Top Rim Clamp. **Kit # 4560BSS-P Stainless Steel Rim Clamp Assembly.**

**Diameter Adaptors** for a smaller diameter drum, fit inside the drum holder. They install easily without tools and are quickly removed. Adaptors for 17.5" (44.5 cm) diameter or smaller have integrated brackets at top and bottom of the drum. Adjust for a drum up to 38" (96.5 cm) tall.

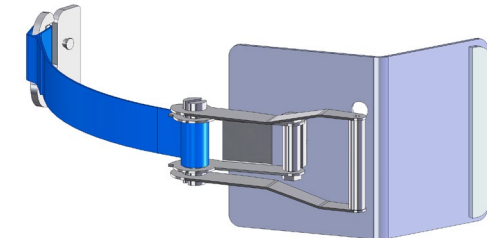


DIAMETER ADAPTORS		
STAINLESS STEEL DIAMETER ADAPTOR	FITS DIAMETER	DOMESTIC SHIP WEIGHT
55/30SS-20.5	20" to 20.5" (50.8 to 52.1 cm)	20 Lb. (9.1 kg)
55/30SS-19	18.5" to 19" (47 to 48.3 cm)	24 Lb. (10.9 kg)
55/30SS-17.5	17" to 17.5" (43.2 to 44.5 cm)	35 Lb. (18.9 kg)
55/30SS-16	15.5" to 16" (39.4 to 40.6 cm)	35 Lb. (18.9 kg)
55/30SS-14.5	14" to 14.5" (35.6 to 36.8 cm)	36 Lb. (16.3 kg)



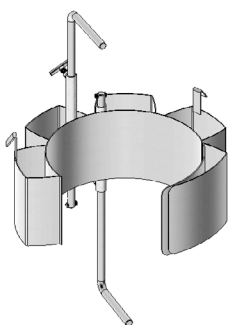
We recommend the **MORStop Tilt-Brake™** on models with manual tilt. It automatically holds the drum tilt angle and prevents uncontrolled turning, even when drum contents shift.

**Option # 3900SSi-P**  
Stainless Steel **MORStop Tilt-Brake™** factory installed.



### Web Strap with Ratchet

**Option # 5115SSi-P**  
**MORCINCH™** Drum Holder with Web Strap and Ratchet option installed.



### Diameter Adaptors

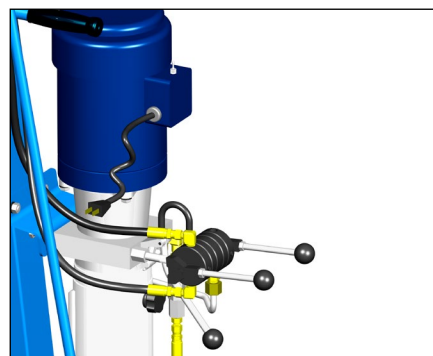
Adaptors for 17.5" (44.5 cm) diameter or smaller have integrated brackets at top and bottom of the drum. Adjust for a drum up to 38" (96.5 cm) tall. They install easily without tools and are quickly removed.

To order complete units with any of the power options below, use the power option number as a suffix on manual model number. Example: Model 520-115 has battery powered lift and tilt up to 106" (269 cm) high. Power-Tilt Options must be ordered on new units from the factory. All units with power options factory installed are shipped fully assembled.

## POWER LIFT & TILT MODELS

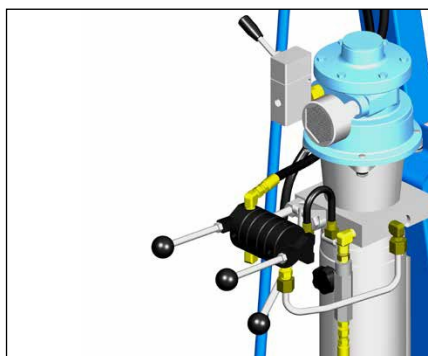
Power Lift and Tilt Models make drum handling easier and faster. There are two hand valve controls, one for the power-lift function and a second for power-tilt.

POWER SUFFIX	MOTOR TYPE	MOTOR CONTROL	SHIP WEIGHT ADDER
-110	AC, 1HP/115V, TEFC	Switch, Cord, Plug	75 Lb. (34 kg)
-114	Air, Vane Type	On/Off Valve	95 Lb. (43 kg)
-115	DC, 12V	Built-in	120 Lb. (54.4 kg)



### Electric Power Lift & Tilt

Hold momentary switch and lift valve to raise drum. Use second valve to control the hydraulically driven drum tilt. Lower the drum with manual release valve.



### Air Power Lift and Tilt

Hold on/off valve and lift valve to raise the drum. Use a second valve to control the hydraulic drum tilt. Lower the drum with manual release valve. *Air motor requirements: 40 to 60 PSI at 40 SCFM.*



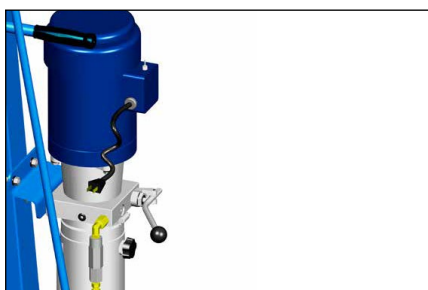
### Battery Power Lift and Tilt

Self contained battery power lift and tilt. Operate battery power controls to raise and tilt drum. Separate charger is included.

## POWER LIFT MODELS WITH MANUAL TILT

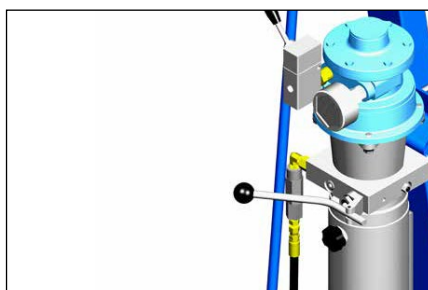
Power-Lift Models ease drum lifting, but retain manual tilt control. Hand crank tilt control is on 60" (152 cm) lift height units. Models with 106" (269 cm) lift heights have pull chain and chain wheel tilt control.

POWER SUFFIX	MOTOR TYPE	MOTOR CONTROL	SHIP WEIGHT ADDER
-120	AC, 1HP/115V, TEFC	Switch, Cord, Plug	40 Lb. (18.1 kg)
-124	Air, Vane Type	On/Off Valve	25 Lb. (11.4 kg)
-125	DC, 12V	Built-in	85 Lb. (38.6 kg)



### Electric Power Lift

Use switch to raise the drum. Lower the drum with manual release valve.



### Air Motor Power Lift

Use on/off valve to raise the drum. Lower the drum with manual release valve. *Air motor Requirements: 40 to 60 PSI at 40 SCFM.*



### Air Motor Power Lift

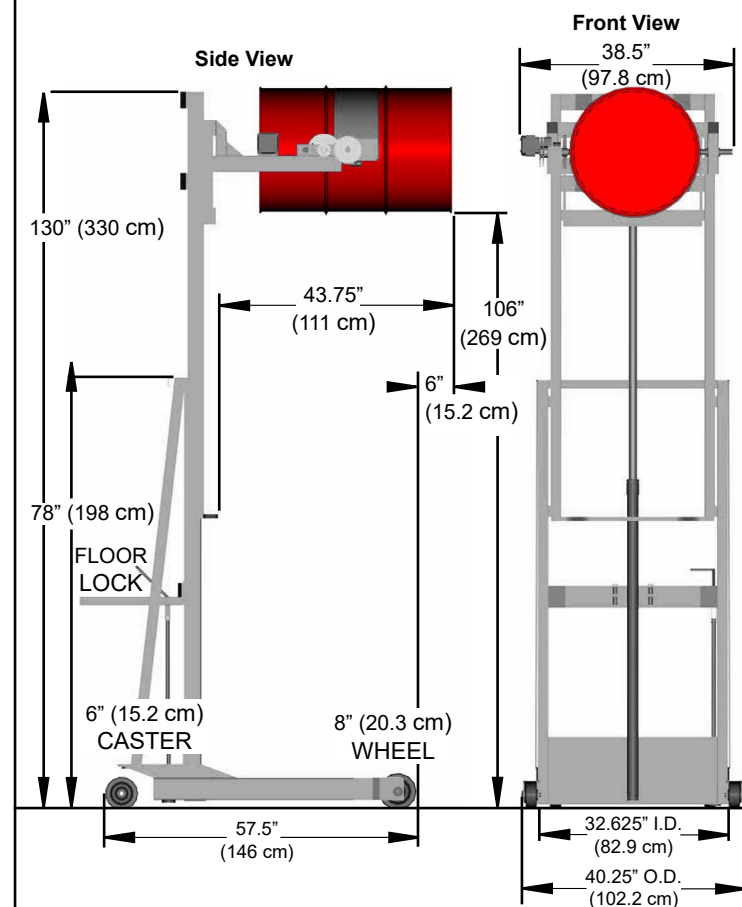
Use on/off valve to raise the drum. Lower the drum with manual release valve. *Air motor Requirements: 40 to 60 PSI at 40 SCFM.*

Existing manual lift models can be converted to power lift. Order Power-Lift Kit for "Field installation," such as O-120FILC-500, O-124FILC-500, or O-125FILC-500. NOTE: 12V Deep Cycle Lead Acid Battery is designed for domestic shipment only. For export shipment, choose the following battery option: Option "NB" No Battery. Customer must obtain battery before use. Exide #27MDP 12V Deep Cycle Battery or equivalent.

		MODEL NUMBERS						
		AC Motor * Power Hydraulic Lift & Tilt	Air Motor † Power Hydraulic Lift & Tilt	12V DC ** Power Hydraulic Lift & Tilt	AC Motor * Power Hydraulic Lift, Manual Tilt ***	Air Motor † Power Hydraulic Lift, Manual Tilt ***	12V DC ** Power Hydraulic Lift, Manual Tilt ***	Manual Hydraulic Lift, Manual Tilt ***
SCALE EQUIPPED	Single-Stage with 60" (1.5 m) Lift	515SS-N-110	515SS-T-114 515SS-N-114	515SS-N-115	515SS-N-120	515SS-T-124 515SS-N-124	515SS-N-125	515SS-T 515SS-N
	Two-Stage with 106" (2.7 m) Lift	525SS-N-110	525SS-T-114 525SS-N-114	525SS-N-115	525SS-N-120	525SS-T-124 525SS-N-124	525SS-N-125	525SS-T 525SS-N
NON SCALE EQUIPPED	Single-Stage with 60" (1.5 m) Lift	510SS-110	510SS-114	510SS-115	510SS-120	510SS-124	510SS-125	510SS
	Two-Stage with 106" (2.7 m) Lift	520SS-110	520SS-114	520SS-115	520SS-120	520SS-124	520SS-125	520SS

### 520 and 525 Series Two-Stage Drum Pourers

- Dispense at up to 106" (269 cm) high
- Retract to a minimum height of 78" (198 cm)
- Turning Radius: 68.25" (174 cm)
- Lowest position of bottom edge of 8" (20.3 cm) wide drum holder
  - 520 Series: 9.5" (24.13 cm) above floor
  - 525 Series: 12.5" (31.75 cm) above floor
- Highest point of frame at a given dispensing height:
  - D = Dispensing height with drum horizontal
  - Highest Point = 78" (198 cm) + (D x 0.5)



† "T" in Model # = Intrinsically safe scale indicator for hazardous environment  
 "N" in Model # = NOT for hazardous areas  
 \* Standard motors are TEFC, 1HP for 115V AC, 60 Hz.  
 \*\* 12V DC power option includes battery and 110V AC charger  
 \*\*\* Manual tilt control for 510SS and 515SS Series is hand crank. Manual tilt control for 520SS and 525SS Series is chainwheel and pull-chain.  
 † Air motor requirements: 40 to 60 PSI at 40 SCFM

### 510 and 515 Series Single-Stage Drum Pourers

- Dispense at up to 60" (152 cm) high
- Retract to a minimum of height of 78" (198 cm)
- Turning Radius: 61" (155 cm)
- Lowest position of bottom edge of 8" (20.3 cm) wide drum holder
  - 510 Series: 9.5" (24.13 cm) above floor
  - 515 Series: 12.5" (31.75 cm) above floor

